



Technical parameters of the insulation board AL IzoLine20™

Type: Polystyrene insulation board **AL IzoLine20™** with aluminium surface and groove for heating cable.
 Thickness: 20 mm
 Dimensions: 1 x 0.6 = 0.6 m²
 Description: Light insulation board with aluminium surface and groove
 Spacing: 10 cm
 For the cable type: Line™T10



Installation procedure - dry installation of the floor heating



Polyurethane adhesive for polystyrene



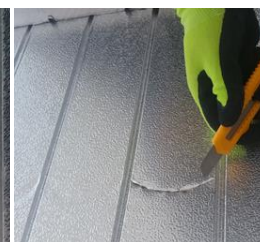
Spray application of the polyurethane adhesive



Gluing **AL IzoLine20™** to the floor



Make a curve by finger pressing



Cut out the curve by trimmer



Imprint the curve by pencil or smooth object

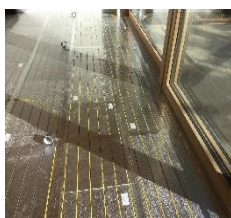


Attach metallic tape to the curve

The curve with the applied tape; make sure no sharp edge will remain!



Fixing the boards together and adhering the cables Line™T10.



The cable Line™T10 installation into the insulation boards



The room after the cable Line™T10 installation



The room after installation and adhering the cables with metallic tape



Floating floor laying on the insulation boards + Line™T10 + impact insulation



Installation instructions

1. In order to glue the insulation board **AL IzoLine20™** to the floor, use polyurethane adhesive for polystyrene (e.g. PANZER STYRO).
2. Before gluing the insulation boards make sure the room is swept and without any sharp objects.
3. After the insulation boards are laid it is necessary to fix the joints with metallic or aluminium tape.
4. Before installation of the heating cable Line™T10, make curves (every second one); see the pictures.
5. **Apply metallic or aluminium tape on the created curves** and grooves, see the pictures. The heating cable must not be in contact with the insulation or sharp edge anywhere.
6. Make a space for sensor between the loops of the heating cable.
7. Insert the heating cable into the grooves in such a way that it will not protrude from the insulation board.
8. Apply the tape on the cables crosswise, across the grooves, for easier installation.
9. After installation of the cables / cable, fix all the grooves and cables alongside with the metallic or aluminium tape.
10. Under the laminated floor, use suitable impact insulation. It must be suitable for floor heating (e.g. QUIK – STEP).
11. The insulation board **AL IzoLine20™** is designed for dry process of laying, therefore use floating floor (laminated, wood, vinyl...) suitable for floor heating.

Extended 10 year guarantee – when the installation instructions are followed

The warranty is null and void, if the installation was not performed by professionally competent person or in case of error caused by incorrect design, damage, incorrect installation or any other later damage. If we are asked to repair or replace such a product, all the costs will be charged.

Date of sale / Stamp:	Installation date:	Stamp:
Electrician / Distributor:	Name and Surname, tel. No., e-mail:	Signature: